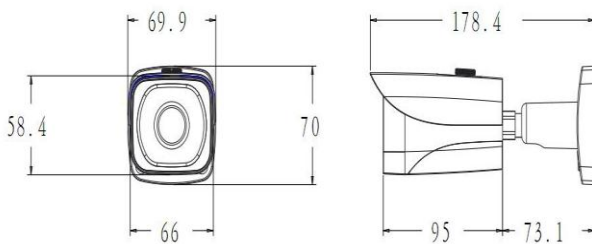




FEATURES

- 1/3" 2 Megapixel CMOS
- 25/30fps@1080P,25/30/50/60fps@720P
- High speed long distance real-time transmission
- Full HD and standard definition switch
- OSD Menu control over coaxial cable
- Day/Night(ICR),AWB,AWB,BLC,3D-DNR
- 6 mm fixed lens (2.8 mm,3.6mm,8mm optional)
- Max. IR LEDs Length 20m,Smart IR
- IP66, DC12V

DIMENTION



SPECIFICATION

Camera	
Image Sensor	1/3" 2 Megapixel Aptina CMOS
Effective Pixels	1920(H)x1080(V)
Electronic Shutter	1/3s~1/10000s
Video Frame Rate	1920X1080@25fps; 1920X1080@30fps; 1280X720@25 fps; 1280X720@30 fps; 1280X720@50 fps; 1280X720@60 fps
Synchronization	Internal
Min. Illumination	0.05Lux/F1.2 (AGC ON),0 Lux IR on
Video Output	1-channel BNC HDCVI high definition video output/ CVBS standard definition video output (Can switch)
Camera Features	
Max. IR LEDs Length	20m Smart IR
Day/Night	Auto(ICR)/Color/B/W
Noise Reduction	2D/3D
OSD Menu	Support
Lens	
Focal Length	6 mm fixed lens (2.8 mm,3.6mm,8mm optional)
Mount Type	M 12
General	
Power Supply	DC12V±10%
Power Consumption	Max 4.5W
Working Environment	-30°C~+60°C, Less than 95% RH (no condensation)
Transmission Distance	Over 300m via 75-3 coaxial cable
Ingress Protection	IP66
Dimensions	178.4mm×66.9mm×70.0mm
Weight	0.5kg

